

TorqLIFT Size and Capacity



MODEL NO.	CAPACITY (LBS)	MAX MOMENT (FT-LBS)	WEIGHT (LBS)	A1 (IN)	A2 (IN)	B (IN)	C (IN)	ØD (IN)	S (IN)
-----------	-------------------	------------------------	-----------------	------------	------------	-----------	-----------	------------	-----------

AIMCO "300" Series

TA300-36	300	170	105	49.9	55.2	3.8	8	4.06	36
TA300-48	300	140	122	61.9	67.2	3.8	8	4.06	48
TA300-60	300	125	138	73.9	79.2	3.8	8	4.06	60

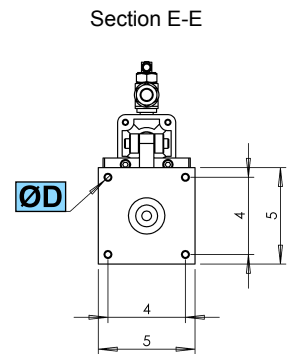
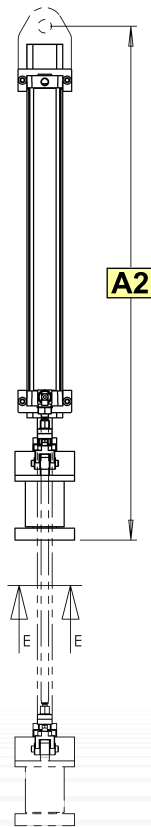
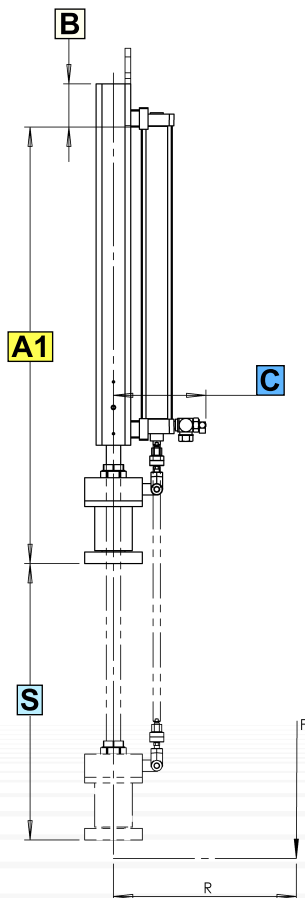
AIMCO "500" Series

TA500-36	500	280	144	52.9	58	3.5	9.3	4.06	36
TA500-48	500	270	166	64.9	70	3.5	9.3	4.06	48
TA500-60	500	250	189	76.9	82	3.5	9.3	4.06	60

AIMCO "1000" Series

TA1000-36	1000	825	206	55.3	67.2	10.3	11.6	4.06	36
TA1000-48	1000	755	235	67.3	79.2	10.3	11.6	4.06	48
TA1000-60	1000	625	264	79.3	91.2	10.3	11.6	4.06	60

*Vertical Stroke listed above is for reference only.
The scope of the application will determine
the exact needed stroke.



- R = Reach-in Dimension
- F = Force of Load Mass
- Moment = $R * F$
- S = Stroke
- A1 For Jib/ Platform Mount
- A2 Single Point Trolley Mount